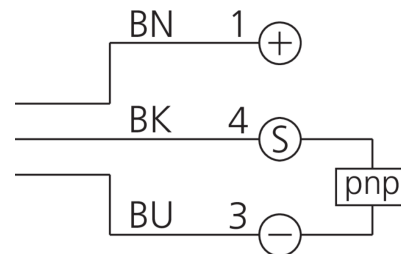
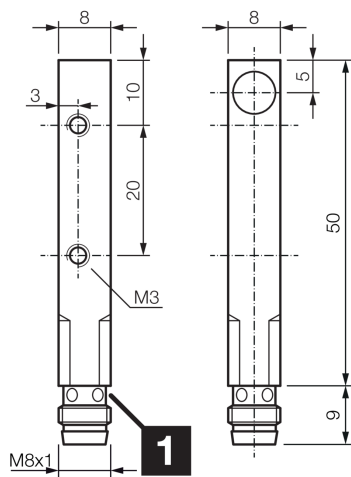


207036
DCCQ 08 M 03 PSK-TSL
Inductive proximity sensor

- Metal connector
- Integrated amplifier
- Short-circuit protection
- Starting pulse suppression
- LED



1) LED 4 x 90° (yellow)

BK: black

BN: brown

BU: blue

Function



Technical data (typ.)

+20°C, 24 V DC

Service voltage	10 ... 30 V DC
No-load current (max.)	10 mA
Insulation voltage endurance	500 V
Installation type	quasi-flush
Housing dimensions	8 x 8 x 50 mm
Housing material	Brass (CuZn, nickel-plated)
Tightening torque (max.)	0,8 Nm
Protection class	III, operation on protective low voltage
Operating principle	inductive
Evaluation	digital
Design	Cuboid design
Characteristics	extremely high operating distance
Switching output	pnp, 200 mA, NO
Voltage drop (max.)	2,4 V
Switching distance (SN)	3 mm
Standardized measuring plate	9 x 9 x 1 mm
Switching hysteresis (max.)	15 %
Switching frequency	1.000 Hz
Ambient temperature during operation	-25 ... +70 °C
Protection type	IP 67



207036

DCCQ 08 M 03 PSK-TSL

Inductive proximity sensor

Technical data (typ.)

+20°C, 24 V DC

Connection

Connector, M8, 3-pin

Connection cable

TK ...

More information / accessories

<https://www.di-soric.com/207036>