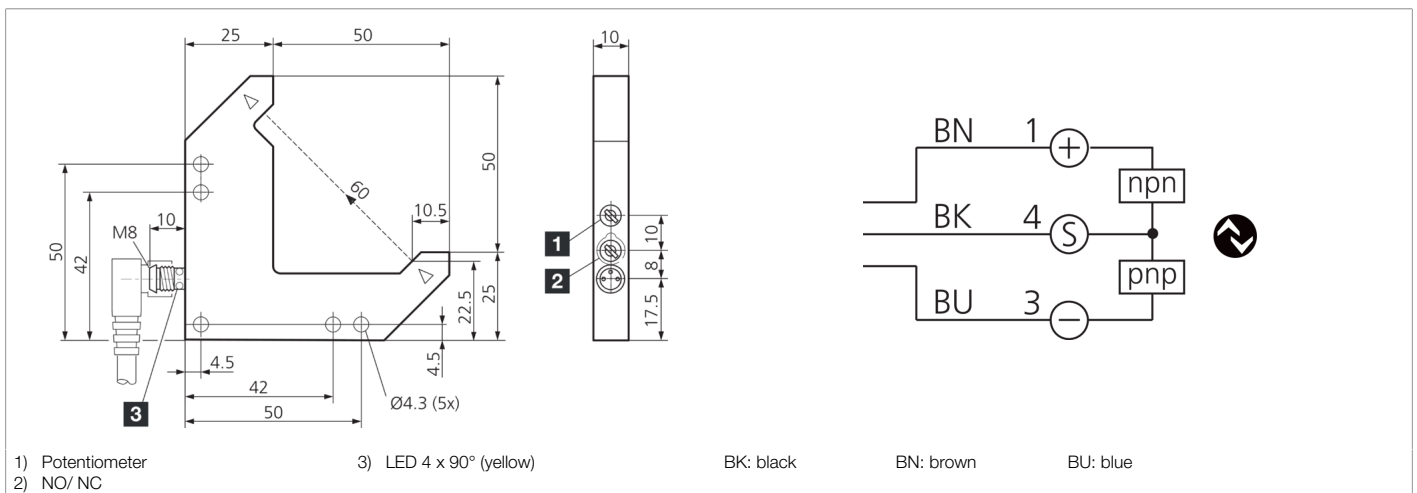
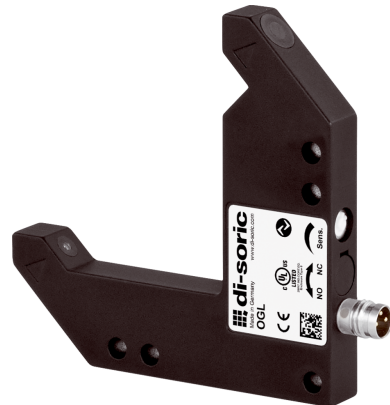




210632
OGL 051 G3-T3
Angled light barrier

- 4 operating modes as an IO-Link parameter
- Switch-on/off delay as an IO-Link parameter
- Diagnostics with IO-Link
- Metal casing
- Sensitivity is adjustable
- High switching frequency
- Light/dark switching
- Bright ring LED
- High protection type
- 5-year warranty



Function											

Technical data (typ.)	+20°C, 24 V DC
Service voltage	10 ... 30 V DC (Supply Class 2)
No-load current (max.)	30 mA
Insulation voltage endurance	500 V
Leg length internal	50/50 mm
Housing dimensions	75 x 75 x 10 mm
Housing material	Die-cast zinc (powder-coated)
Material	Mineral glass (Optics)
Protection class	III, operation on protective low voltage
Operating principle	Optical
Evaluation	digital
Design	Angle
Switching output	Push-pull, 200 mA, NO/NC, switchable
Voltage drop (max.)	1,0 V
Interface	IO-Link (V1.1, COM2 38.4 kBd, Smart Sensor Profile)
Light source	LED
Color	red
Wavelength	660 nm
Modulation	Clocked
Ambient light immunity	25 kLx
Range	60 mm (optical axis)
Resolution	Ø 0,3 mm, Ø 0,2 mm, Ø 1,0 mm, Ø 0,3 mm (min. 0.2 mm)



210632
OGL 051 G3-T3
Angled light barrier

Technical data (typ.)	+20°C, 24 V DC
Reproducibility	0,02 mm, 0,02 mm, 0,02 mm, 0,02 mm
Sensitivity adjustment	Potentiometer
Switching frequency	5.000 Hz / 1.500 Hz / 250 Hz / 8.000 Hz
Shock/vibration load	10 ... 55 Hz / 0,5 mm / 30 g
Ambient temperature during operation	-25 ... +60 °C
Protection type	IP 67
Connection	Connector, M8, 3-pin
Connection cable	TK ...
More information / accessories	https://www.di-soric.com/210632